

*A CHALLENGE TO HONOR BETTY MANN*



**Go Online  
Today!**

Have you checked out the Luverne Alumni News at [www.alumninews.info](http://www.alumninews.info) lately? You are able to read your Alumni News online. Now that it is available, let us know you would like to discontinue the hard copy to go green (save postal expenses and a tree). Please email Patti Pierson at [piersonprp@frontiernet.net](mailto:piersonprp@frontiernet.net)

**Inside This Issue:**

[News](#)  
[Honor Roll of Alumni](#)  
[News Contributors](#)  
[What We've Heard](#)  
[Remembering our Classmates](#)  
[New Dollars for Scholars Endowments](#)



*Send Betty Mann a card  
for her 85th birthday;  
Support History Center*

The Rock County Historical Society Board of Directors celebrates the 85<sup>th</sup> birthday of Betty Mann with a challenge to all LHS Alumni. Betty's birthday is on May 1<sup>st</sup> and in celebration, the Board of Directors wants her vision and dream for the Historical Society to come true.

Over the past 6 months, there has been a massive effort to fund the purchase and renovation of the former Herman Motor Company building on Main Street to become Rock County's new HISTORY CENTER. The HISTORY CENTER is slated to replace the Society's current base of operation at the former Masonic Temple. (The Temple will be given back to the Mason's for the original purchase price of \$1.)

In moving from a building with 1,500 square feet of display space to over 5,000 square feet of display and 4,000 square feet of

## News

During this past quarter, the Alumni News received money in the form of memorials and gifts totalling \$3,070. In the memorial section, **the individual being memorialized is printed in bold print**, followed by the individual or individuals who made the gift. Contributions given by graduates and friends follow the list of memorials.

**Thank you for your support!**

### NOTE:

If you have recently made a contribution to the *Alumni News* and your name does not appear on this page, please let the staff know. The chances are your contribution was received after this page was compiled on Mar. 31. Please watch for the next issue in August 2015 for additional names of *Alumni News* contributors.

### Alumni News Financial Summary

Balance 12/31/14	\$1,084.83
Donations:	\$3,070.00
Expenses:	
Printing	\$982.27
Postage	\$2,173.69
Labels	\$200.82
Balance 3/31/15	\$798.05

## Honor Roll of Alumni News Contributors

Compiled by

*Johnna Bowron Ahrendt*

### *Nathan Skattum '91*

- *Hal '60 & Donna Paulson*
- *Joseph Rowe '63*
- *Jack '72 & Pam (Thorson) '75 Hommen*
- *James '66 & Carol (Aanenson) '66 Hatting*
- *Mark '76 & Amy (Gonnerman) '86 Overgaard*
- *Shelby Nelson '91*
- *Norman & Joyce (Reemts) '47 Wessels*

### *Class of 1959*

- *Richard Barmore '59*

### *Sunny (Turner) Haggard '51*

- *Joyce (Turner) Sexton '53*

### *Dorothy Rodman - friend*

- *Chuck Rodman '66*
- *John Rodman '64*
- *Joyce (Turner) Sexton '53*

### *Sondra (Anderson) Membrez '54*

- *Gail (Shelby) Palmer '47*

### *Dale Haggard '52*

- *Joyce (Turner) Sexton '53*

### *Julia McFadden '79 (honorary)*

- *Arvin Rolfs '57*

### *Ann McFadden '82 (honorary)*

- *Arvin Rolfs '57*

### *Maggie McFadden '83 (honorary)*

- *Arvin Rolfs '57*

### *Pat McFadden '85 (honorary)*

- *Arvin Rolfs '57*

### *Tim McFadden '88*

- *Arvin Rolfs '57*

### *Gordon Backer '47*

- *Gail (Shelby) Palmer '47*

### *Ruth (Roberts) Hommen '43*

- *Joyce (Turner) Sexton '53*
- *Jack '72 and Pam (Thorson) '75 Hommen*

### *William "Bill" Bullis '70*

- *Rick '70 & Carol (Schumacher) '70 Serie Class of 1970*

### *Gladys "June" Mann – friend*

- *Gene Salzman '54*

### *George J. Mann – friend*

- *Gene Salzman '54*

### *Jim Hommen '70*

- *Jack '72 & Pam (Thorson) '75 Hommen*

### *Kathy Thorson '77*

- *Jack '72 & Pam (Thorson) '75 Hommen*

### *Genevieve (Olson) Anderson '46*

- *Carol Kuhlman – friend*
- *Lorraine Olson – teacher*
- *Shirley (Skoland) Ford '45*
- *Deanna (Vatland) O'Toole '43*
- *Betty (Goettsch) Gruber '47*

### *Darold L. Johnson '48*

- *Dwayne W. Johnson '55*

(Continued on page ) 5

# What We've Heard . . .

Compiled by Jane Wildung Lanphere

**Frances Michael Folsom (LHS 1942)** shared this interesting remembrance of her remembrances of the Palace Theatre:

“The Palace Theatre was an important part of my life. Every week I went to my father’s law office to ask for \$.10 to go to the Palace to see the serial playing that week. I looked forward to the event with great anticipation. Therefore, my parents found it a very effective disciplinary tool, threatening to deny me the money and the ability to go to the Theatre if I broke a household rule. The pipe organ was very elegant and Maude Jochims played it beautifully before every performance on the screen. Another connection was the small movie theatre down the street, The Pix. This theatre was owned by Mr. Jochims who generally encouraged rowdy children to attend a performance there. While I was in High School, I ushered there and remember farmers making the movie a part of their Saturday night in town. I ushered for “Gone With the Wind” so many times, I believe I knew some of the dialogue by heart. I realize now I had an idyllic life growing up in Luverne. I’m glad you are preserving the history of the Palace for those of us who lived it or those who will learn about the historic theatre for the first time.”

Another story of the Palace is shared by **Gloria Schlapkohl Siekmeier (LHS 1950)**:

## Let's Hear from YOU!

Let us know what you are doing and we'll pass it on to other alumni. Complete and then place this form in an envelope and mail to:



**Alumni News**

**709 N. Kniss Avenue,**

**Luverne, MN 56156 or email: [luvernechamber@co.rock.mn.us](mailto:luvernechamber@co.rock.mn.us)**

Name \_\_\_\_\_

Mailing Address \_\_\_\_\_

City \_\_\_\_\_ State \_\_\_\_\_ Zip \_\_\_\_\_

Phone Number: \_\_\_\_\_

E-Mail \_\_\_\_\_

Check here  if you wish to have your e-mail address included in the directory.

Year of Graduation \_\_\_\_\_

Comments: \_\_\_\_\_

\_\_\_\_\_

\_\_\_\_\_

\_\_\_\_\_

\_\_\_\_\_

“Palace Theatre – a magic place indeed.”

“For a girl living on a farm that lacked electricity and indoor plumbing, just entering the lobby of the Palace was like stepping into another world. Even the recessed lights bordering the staircase to the “lounge” seemed quite elegant.”

“Beside Luverne High School, the other focal point of our teenage lives in the 1940’s was the Palace. It was a centerpiece for not only Luverne, but for all of Rock County. The Palace was the place to be, as a social experience, and the

opportunity to see classic films suitable for all ages and view current news events.”

“Herman’s insistence on keeping his pride and joy free of sticky treats stays with me today. The concessions stand does not draw me. What would Herman say?”

“Thank you, Herman and Maude Jochims, for creating a treasure 100 years ago, that remains today.”

## Remembering our Classmates

Compiled by Carol McDonald

### 1940-1949-

**Gleva Boysen Jacobson '42** died February 18, 2015, in Estherville, Iowa. She worked for the Star Herald in Luverne. In 1943 she married Sid Hammer. They had four children. They lived in several states while Sid served in the U.S. Air Force. The couple bought the telephone Company in Hills. A month before cutover to dial operation, her husband was killed in a tractor accident. In 1960 she married Dale Jacobson. They moved to Estherville where Dale established Dale. D. Jacobson Inc. Gleva was a secretary for the firm while serving as general manager for Hills Telephone Company. In 1980 the phone company was sold. She and Dale enjoyed buying old houses and remodeling them into apartments. She was active with several volunteer organizations. She loved animals and enjoyed time with her grandchildren. Gleva is survived by three children, Susan Jacobson (Dan Elwood, Jan (Tom) Gilbert, and Tim (Rita) Jacobson; many grandchildren and other relatives and friends.

**Wayne Burmeister '49** died March 15, 2015, at the University of Minnesota Medical Center. As a teen he worked at Renfro's Variety Store. He served in the Navy from 1951-1955, running the ship store on the USS Thomas Jefferson. He graduated in 1957 with a business degree from the University of Minnesota. He then took a management training position with J. C. Penny in St. Louis Park. He married Doloris Kiecker in 1963. The couple moved to Slayton where they owned and operated a department store for 40 years. They also operated Hub Fabric stores in Litchfield and Marshall. He enjoyed photography, stamp collecting and gardening. Wayne is survived by his daughter, Dr. Lyn A. Burmeister, and three sisters, **Elaine Jensen '45, Darlene Johnson '51 and Arlene Mann '51**

**Ramona Aanenson Skidmore '49** died March 3, 2015. In 1953 she met Bill Skidmore at a street dance in Magnolia and a year later they were married. They later moved to Blaine to raise a family. When her three children were in school, she worked as a secretary. In 2009 she became a resident at Country Terrace in Spooner, Wisconsin. Ramona is survived by a daughter, Lori (Joe) Messner, a son Bill (Shannon) Skidmore, six grandchildren and three great grandchildren.

### 1950-1959-

### 1960-1969-

**Larry Boelman '60** died February 4, 2015, at the Hospice Cottage in Luverne. After graduation he helped his parents on the farm. Larry was drafted into the U.S. Army on Feb. 19, 1964. He was stationed in Germany and served on a radar team and as parachutist. He was honorably discharged on Dec 1, 1965, and returned home to the farm. He married Gloria Hansen on July 2, 1967 in Luverne. The couple lived and farmed in Kanaranzi Township. Larry worked a few winters at A.R. Wood Manufacturing in Luverne. He retired from farming in 2013. He was a Nascar fan and was thrilled when his children surprised him with tickets to the Daytona 500 in February 2005. Larry is survived by his wife, **Gloria Boelman '65**, two children, **Dallas '89 (Tiffany) Boelman**, and **Shelly '92 (Wade) Popkes**, a daughter-in-law, Tammy Boelman, seven grandchildren; a sister, LaVonne (Donald) Reinke and sisters-in-law Ardyth (Kenneth) Bowen, Clifford (Gloria) Hansen, Vivian (Sidney) Aarestad, and Raymond (Elaine) Hansen.

### 1970-1979-

**Steven E. Hup '74** died March 30, 2015. After graduation he went to work for Terrace Park Dairy delivering milk door to door. On June 3, 1976, he married Debra DeYager. After they were married the couple made their home on acreage west of Steen. Steve went into farming with his father-in-law, Bill, near Steen in 1979. In 1982 Steve and the family moved to Ripon, CA, where he worked in landscaping. A year later, they returned to his family's farm south of Luverne where Steve continued the family operation as an agricultural engineer until the present. He enjoyed prairie dog hunting, golfing, attending car shows, and traveling. He was a History and Discovery Channel buff. Steve loved spending time at the lake where he enjoyed boating and fishing. He had a unique form of dancing and lived life with a couple of sayings: "Go big or go home." And most importantly "Love each other." Steve is lovingly remembered by his wife, Debbie, two daughters **Andrea '99 (Dusty) Kovama** and **Lindsay Hup '03**; two grandchildren, parents John and Alvina Hup; two brothers, **Ken '76 (Sue) Hup** and **Dave '81 (Teresa) Hup**; and other friends and relatives.

Continued on page 13



## Honor Roll of Alumni News Contributors, continued from page 2

### **Jeff Menage '82**

- Jack '72 & Pam (Thorson) '75 Hommen

### **Paul Gabrielson '70**

- Jack '72 & Pam (Thorson) '75 Hommen

### **Kristie (Cook) Davis '72**

- Jack '72 & Pam (Thorson) '75 Hommen

### **Rick Jauert '72**

- Jack '72 & Pam (Thorson) '75 Hommen

### **Bill Mann '72**

- Jack '72 & Pam (Thorson) '75 Hommen

### **Neal Norton '72**

- Jack '72 & Pam (Thorson) '75 Hommen

### **Dr. Albert C. Martin – friend**

- Joyce (Turner) Sexton '53

### **Martha Wiggins '47**

- Gail (Shelby) Palmer '47

### **Allen Holling '59**

- Joseph Rowe '63

### **Shirley (Ahrendt) Mundahl '44**

- Keith Mundahl '44

### **Larry Boelman '60**

- Hal '60 & Donna Paulson
- Anna (DeGroot) VanBatavia '60
- Darlene (Hitch) Woolsey '62

### **Contributions**

- Melinda (Blashill) Ohlenkamp '96
- David Schmuck '69
- James Wiggins '42
- Bill Frakes '66
- Donald Loger '53
- Joseph Rowe '63
- Arthur Tangeman '38
- John Remme '56
- Jim Petersen '73



*Alumni News accepts PayPal contributions!*

Visit [www.alumninews.info](http://www.alumninews.info) and click on the donate button.

*Thank you for your support.*

## What We've Heard/continued from page 3

---

**A. J. Tangeman (LHS 1938)** of Landisburg, PA shares his memories of the Palace Theatre:

"The Palace Theatre article was very well done but there was no mention of the "real lady" of the theatre – Maude! Maude dedicated herself at the organ when the silent cowboy movies were on. To play mood music accompanying the hoof beats of the horses, the wild stagecoach rides, and the hold ups in the 1920's was really a testament to her musical talent."

"I also enjoyed the article about the Arcade Building. R. J. Stephens was known to me as "Clyde." It was Clyde who started calling me "Tim" – my dad's nickname and being "Junior" I was happy to adopt the alias. I have used that nickname ever since."

"Should I ever get the chance to drive back to Luverne, I would very much like to patronize the new restaurant in the Arcade Building. Last time I visited, it was primarily to see my friends in the "Last Man Club." I think that Warren Herreid told me there are still seven left. That's great!"

**LHS Grad Don Stoterau (LHS 1942)** celebrated his 90<sup>th</sup> birthday with friends and family between Christmas and New Years of this past year. Don and his wife Kay live in Mesa, AZ and were delighted to welcome family from Minnesota, South Dakota, Texas, New Mexico and California to their home as they celebrated this birthday milestone. There was an Open House for friends and family, a family golf outing and a weekend dinner highlighted with a

light roast by Don's pastor, Rev. Mark Friedrich. Rev. Mark brought his puppet friend, Reggie, to entertain for the roast. Don's good friend, Bill Krafft, closed the evening by singing "The Lord's Prayer."

Don sees and visits with his classmate, Jeralyn Wuertz Rittaco, who lives in St. Paul. Jeralyn winters in the same community as Don and Kay, FOS in Mesa. They invite and encourage other friends, classmates and Luverne grads to keep in touch with them!

**James Wiggins (LHS 1942)** sends greetings to Luverne alumni from Denison, IA. James writes:

"My wife was a graduate of North High School in Minneapolis, MN. She passed away on her birthday at the age of 85 in 2012. I reached the age of 90 in October. For 40 years I worked for the Albertson Grocery Store chain full time and now work part time going on 28 years. How many classmates are still alive? I would love to know. Hope my classmates are enjoying their lives like I am!"

**Leonard Hansen (LHS 1942)** from St. Peter, MN sends a challenge to his classmates:

"I would really appreciate it if someone would organize our 70<sup>th</sup> reunion! It would be great to see all of my classmates and remember those "good ole days!"

---

## LHS ALUMNI: PLEASE SHARE YOUR STORIES AND MEMORIES

Alumni News will be featuring a series of articles in 2015 about the Historic Palace Theatre. The Palace will celebrate its 100<sup>th</sup> anniversary next year.

Alumni are invited to share photos, stories, articles, and other memories about the Palace Theatre.

Please send your contributions by email to [luvernechamber@co.rock.mn.us](mailto:luvernechamber@co.rock.mn.us), call Jane at 507 283-4061 or mail at

Luverne Area Chamber, 213 East Luverne Street, Luverne, MN 56156.



## OUR HISTORIC PALACE THEATRE

### Palace Theatre Vitaphone Movietone Installed!

May 2, 1929

It was big news in the newspaper on May 2, 1929 when Manager Herman Jochims announced the installation of the Vitaphone Movietone equipment at the Palace. The installation of this equipment brought the Palace to the same operating platform as the Minnesota Theatre in Minneapolis, the State Theatre in Sioux Falls, and the leading theatres in all the larger cities. Word on the street was that this installation represented an investment of between \$15,000 and \$25,000.

At last, "Pictures That Talk Like Living People" was the Vitaphone claim to fame. It was written: "Vitaphone brings to the audience the world's greatest entertainers —Screen stars, Stage stars, Opera stars, Famous orchestras, Master musicians. Vitaphone Talking Pictures

holds audiences spellbound. Vitaphone recreates everything real for your eyes and your ears. — Vitaphone makes movies see and hear them act, talk, sing and play like human beings in the flesh. Vitaphone is the talking picture—the exclusive product of Warner Brothers."

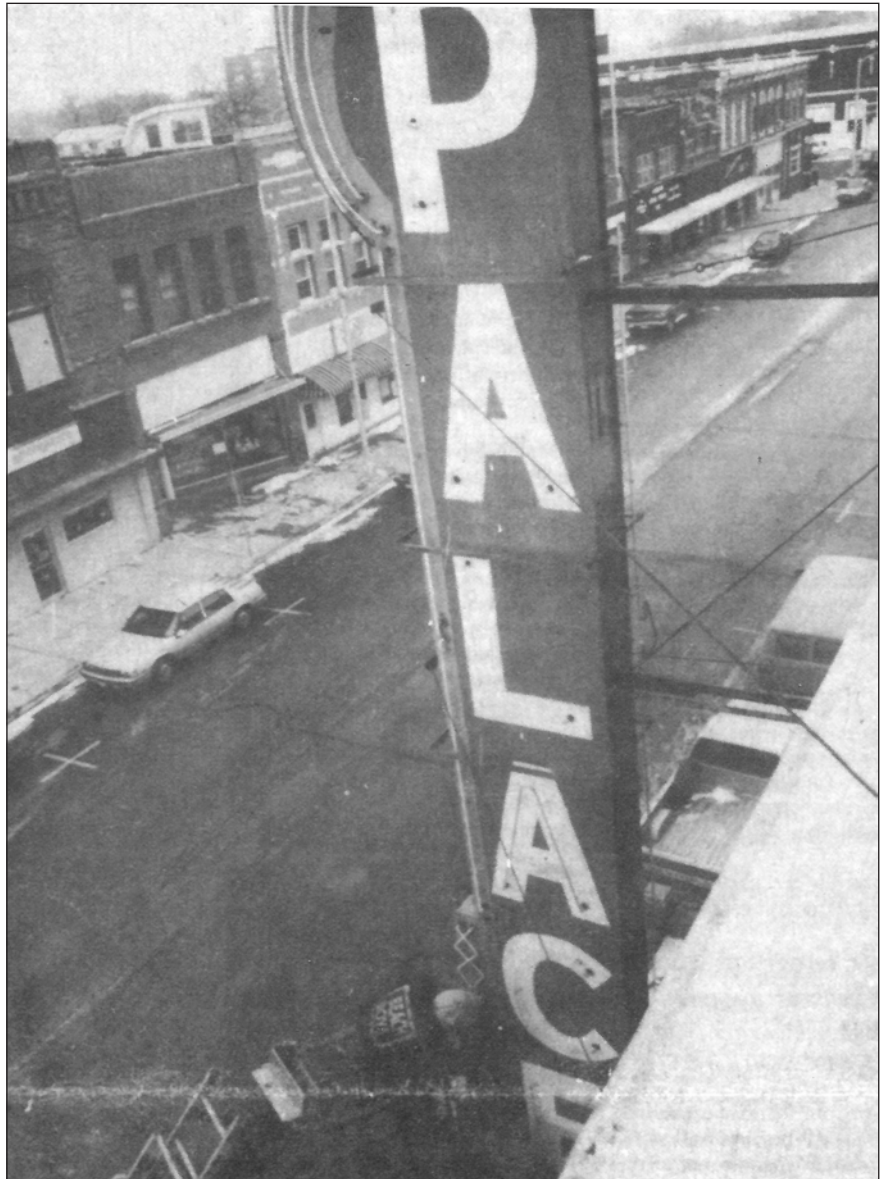
Vitaphone was installed in about 500 theatres throughout the United States in 1929. In that same year Herman Jochims installed Vitaphone in the Palace Theatre. The Vitaphone machine was installed in the projection booth in the Palace Theatre so one operator can handle the volume control mechanism. It would take an operator about a week to learn how to operate the machine. This was the first Vitaphone Movietone Equipment to be installed in any theatre in Minnesota in a city of a population under five thousand. Vitaphone Days was officially



announced in the Rock County Star Herald as May 9-11, 1929.

On opening day at 12:30 pm, the Palace Concert Band assembled before the crowd at the Palace Theatre and burst forth with the blare of trumpets and the roar of drums. Under direction of Clarence Ludlow, owner of the Luverne Music Shop, the 18 piece band presented a concert of popular music. Following the performance, the movie "Sonny Boy" was presented daily from 2:00 pm to 11:00 pm. Other attractions followed the film included: "Coquette," "The Desert Song," "My Man," "The Greyhound Limited," and the "Singing Fool" featuring Al Jolson.

Luverne merchants sent well-wishes to Jochims on his new equipment. These comments included: Fitzer Brothers Clothing; Exchange State Bank of Hills; Schoon Motor Company; B.E. Leas - Jewelry, Book & Music Store; Connell's Drug Store; The City Bakery; Luverne Oil Co.; Silverbergs; Rock County Bank; Lea's Grocery; Mari-Posa Beauty Parlor; Kay's Barber Shop; Nelson Brothers; Urquhart Motor Company; Palace Confectionery; Myhre Studio; Kash Saving Store; Home Automotive Company; Larson Garage; Merrill Shoe Store; J. M. Rustad Fine Furniture; New City Auto; The Wolff Stores; Batsford Lumber; Dr. C. O. Wright; Dr. G. V. Butler; Dr. E. O. Thorson; E. H. Canfield; R. C. Engan; Dr. C. L. Sherman; Dr. J. W. Hawkinson; Dr. A. M. Anderson; Dr. C. H. Haggard; W. A. Rowe, William Jacobson, Frank Ferguson; Dr. F. H. Bofenkamp; Dr. H. G. Dongremond; Ivan O. Hansen, Frank Michael, Dr. E. A. Blake; Dr. C. T. Brown; W. E. E. Greene; Dr. W. B. Covey; Herman Fitzer; Ben Cole; Dan Main and E. A. Hilke.



### **New 30 Foot Palace Theatre Sign Is Now In Operation**

*(Reprinted from the Rock County Star Herald – Friday, October 13, 1939)*

Current was turned on Thursday night for the Palace Theatre's beautiful new neon sign, the erecting of which was completed Friday evening.

The sign is slightly over 31 feet in height and the top of the sign is 45 feet from the pavement and extends six feet above the front of the theatre building.

The sign was installed by the Walker Neon



## Remembering the Palace Theatre/continued from page 8

Sign Company, of Hopkins, MN. This company has installed numerous neon signs in this city during the past two years.

Florescent neon lighting has been utilized throughout the sign. The name "Palace" is in vivid green, surrounded by ruby red tubing in the intensity of the florescent colors and the conventional neon tubing on the border makes a striking and highly artistic sign.

The sign is one of the largest and most modern in this section of the country, and its purchase is in line with Manager Herman Jochims' policy of providing his theatre with the most modern and best equipment.

Showing at the Palace this week Sunday, Monday and Tuesday (October 15-17) was "Hollywood Calvalcade," the much talked about picture of the year. It starred Alive Faye and Don Ameche, also Buster Keaton, Stuart Erwin and Donald Make.

Basil Rathbone in "The Adventures of Sherlock Holmes" will be featured at the Palace on Wednesday, October 18. Stars are Nigel Bruce, Ida Lupino and Alan Marshall.

Joan Blondell and Melvin Douglas in "Good Girls Go to Paris" will be shown on Thursday, Friday and Saturday (October 19-21.) This is comedy at its best.

*Re-printed from the Rock County  
Star Herald - October 20, 1939*

### **At the Theatre – "The Wizard of Oz"**

Once in five to ten years a picture is produced in Hollywood that is set apart from all other so-called great productions.

Once it was "The Birth of a Nation," another was "Snow White and the Seven Dwarfs" and now it is "The Wizard of Oz."

It appeals to young and old alike. It has everything – it's a towering spectacle presenting breathless beauty, baffling magic and enchanting song.

Judy Garland, Frank Morgan, Ray Bolger, Bert Lahr, Jack Haley, Charley Gropewin, Clara Blandick and a little dog named Toto plus hundreds of others.

October 22-24 at the Palace plus a matinee on Sunday afternoon.



### **The Passing Away of a Star in Luverne**

Thursday – April 7, 1949

**MAUDE JOCHIMS**

*Re-printed from the Rock County Star  
Herald*

Forgive us will you if we lay aside the trivia, to pay tribute to a friend – not only our friend but your friend.

There was something heartbreaking to see the boys from the Palace Theatre staff take the ladder and remove the sign for the current attraction.

Down came the letters and up went the words "Theatre Closed."

It signified the end was near for Mrs. Herman Jochims. "Maude" as she was affectionately known to thousands of people thru the Midwest.

"Maude" was really "Mrs. Show Business" – the half of the famous "Maude and Herman" team – that had worked hand in hand together in the amusement business, for a

**Remembering the Palace Theatre/see page 10**

## Remembering the Palace Theatre/continued from page 9

third of a century, as partners and husband and wife.

Maude was a glamour girl in every sense of the word – and if you were a newcomer and didn't know – you would have said she was a “stunning women in her very early forties.” In her later years, she certainly didn't look it.

She carried herself with verve and distinction and wore clothes as only a tall woman could – from a little distance you would have missed her age by forty years. That vivid hair of hers was her pride and joy – and for many a year she had a special hair dresser, a close Negro friend, who came from Minneapolis at regular intervals to “do” her hair.

Maude had a flair for the dramatic – she had exotic taste and a shrewd eye for color. She was bold in effect she sought to achieve for the theaters. Like Herman – price was no object – every last detail had to be “right” for their customers. Time and time again some article was changed because it didn't satisfy her demands for “our friends – the customers.”

Yes – Maude left her imprint everywhere – not only at the Palace and Pix theaters, but throughout town – her home. The apartment above the theatre won't be duplicated in many cities of great population – bold design – striking colors – “modern” in motif to the extreme – it represented Maude's last effort.

She never got much opportunity to drive in the big new lush colored Packard convertible. Maude was fighting a two year battle against cancer. Intensely proud she kept her secret to herself for a long time.

Maude lived a full life – born in Rock County she lived as a youngster on a farm west of town. She knew what it was to wade ankle deep in barn yard muck and “slop the hogs.”

She had intense ambition and a keen sense of music. With her sister, Mamie, and her brother Clarence, they formed a trio that was well known here in the “nineties.”

An old hand bill we saw tells of the big concert on August 31, 1894, at the Opera House by Flore Music Class.

The bill told of eight year old Maudie, the star juvenile banjoist and predicted that Luverne would someday be intensely proud of the talented Walters children.

Maude could have been a movie star, maybe if the odds had come up right. At any rate she was in a few bit parts in some of the first movies ever made. She clerked at the May Company – she did some modeling for them – she came back to Luverne and worked in the music store shop that Earl Perron operated.

In 1915, the year the new theater opened, she started playing the piano for Herman. She was the first to play a piano for a Luverne movie and had been playing piano and pipe organ since, up until she became ill.

Maude got her wish – many a time she would confide in us, “Oh, how I hope I can just live until Dad dies.” She worried so much about her father – at his great age – and his independence – she worried what would happen to him after her death. She got her wish – she outlived him by a scant month and a half.

Maude had clothes – she had looks – she had charm – and yet she was intensely loved by “folks.” I never heard another woman say a mean or catty thing about Maude – no greater compliment can be paid.

Maude loved people – her flashing smile as she greeted you as you approached the ticket office was as warming as the neon lights of the canopy above.

Maude was vivid, intense and colorful – she was ageless in that she refused to grow “old” in the customary sense of the word – she was one of the glamorous personalities that are unforgettable.

Maude was one of these persons who spoke kindly and with friendliness to us when we came to Luverne, a lonesome stranger, and thru the years since has remained a friend.

Many a time we wanted to say something in print like this about her – but she was fighting to the last, grabbing every straw with her indomitable will to live, so we couldn't say it then.

But we think that she knew in her heart how we felt.



The Vietnam bunker in the Herreid Military Museum will be modeled after the one in this photograph of Gene Boyer, a high school (Round Lake) classmate of Terrie Gulden and a friend.

## Alumni encouraged to share images for Veteran Photo Show at Carnegie

The Carnegie Cultural Center is proud to announce a special show that is scheduled for the month of October 2015 to honor our community's veterans by hosting a photographic show of Rock County Veterans. The show will open on Tuesday, October 6<sup>th</sup> and remain up for the month of October.

We invite all Luverne High School Alumni Veterans to become involved by mailing or emailing a photo that we may hang for the show. The photograph can be one from your active duty days or one taken at any time of your life. Families are encouraged to send images in memoriam.

We ask that all submissions include:

Name

Current Address (or Date of Death)

Branch of Service

Dates of Service

LHS Graduation Year

would like to send a photographic, please send a copy of the photograph so that we do not have to return the image. If possible, we would like to use 8" by 10" printed images for display but any size photo will be accepted. If originals are delivered to the Luverne Area Chamber, we will make a copy and return the original to you immediately.

Following the show, the images will be taken down, catalogued and preserved at the Herreid Military Museum.

All photos used in the October 2015 Veterans Photo Project must be emailed, mailed or delivered to the Luverne Area Chamber no later than Friday, September 18<sup>th</sup>. Contact Jane at 507 283-4061 for additional information.

**Mail to: VETERANS PHOTO SHOW**  
**Luverne Area Chamber**  
**213 East Luverne Street**  
**Luverne, MN 56156**

Digital images are encouraged. We are happy to print the photos for display. If you





The new location will provide handicapped accessible display and research space as well as offer a climate controlled facility to maintain the historic treasures of Rock County.

## Betty Mann 85th birthday for History Center/continued from page 1

storage – Betty’s original vision of what the Rock County Historical Society can become will be a reality.

The move will provide handicapped accessible display and research space as well as offer a climate controlled facility to maintain the historic treasures of Rock County. The goal of the fund drive was \$900,000. To date, over \$750,000 has been raised but renovation cost estimates came back higher than originally estimated by the architect.

**To support this dream, the Board has kicked off “Betty’s 85<sup>th</sup> Birthday Celebration Fund Drive.” To add to this effort, generous anonymous donors have come forward to offer a dollar for dollar match for any cash donation or pledge given to the project after March 20, 2015 – up to a total of \$300,000.**

The Historical Society Board comes to Luverne Alumni asking for you to consider a donation or a pledge to help the society reach this goal in honor and celebration of Betty’s 22 years of service as the Society’s President and her involvement in so many projects within the community:

**Work for the Rock County Historical Society:** Serving as President for 22 years and counting, oversees research and organization of materials, instrumental in research on Al McIntosh for Ken Burns’ series—THE WAR; wrote the forward to the book Selected Chaff; instrumental in Tales from the Graves; volunteers for Hinkly House tours and events; researched and prepared Luverne’s Historic Home Tour; promotes history by reading for first-graders &

sharing history objects with them; Palace Theatre “expert” and willing volunteer; led acquisition efforts of historical buildings including Summer Kitchen, Fitzer Century Barn, Ordnung Building and Country School; instrumental in fundraising drives for the History Center and Palace Theatre; writes “Bits by Betty” column in the Star Herald for many years; researched the history of buildings throughout Luverne; the new Rock County History Book was created with Betty’s passion and is dedicated to her; works on the development of the Heritage Museum and Herreid Military Museum...and much more!

**Community Work:** BMAT (former board member, volunteer, organist and tour guide); Rock County Fair Board member; Sanford Luverne Hospice volunteer (14 years); member of the Executive Board of Luverne Initiatives for Tomorrow; hospital volunteer; volunteer at the Veterans Home and Poplar Creek; Pink Ladies; Tourist Club; Rock County Extension Club; Rock County Woodcarvers; Luverne Rotary; P.E.O.; Rock County Senior Citizens; Rock County VFW Auxiliary; American Legion Auxiliary; Maplewood Cemetery Association; First Presbyterian Church (organist, bell choir director for many years, served on Session and Board of Deacons, choir member, Sunday School, Circle and much more); member of the Historic Preservation Commission for City of Luverne... and much more!

*Betty was an elementary teacher at Luverne Public School and became a Special Education*

### 1980-1989-

**Gary Haper '81** of Fulda, MN died January 7, 2015 at the Sanford Hospice Cottage in Worthington, MN. Following graduation he attended the Spencer School of Business where he graduated in 1983. On Sept 2, 1995, he married Deborah Crowley. After their marriage they lived in Fulda where he worked at Antonio's before moving the Adrian. While in Adrian he worked with his family at the Adrian Mini Mart. In 2010 they moved to the Crowley family farm west of Fulda and Gary began working as a backroom manager at Hy-Vee in Worthington. He enjoyed gardening, cooking, woodworking and spending time with his daughters, especially making snowmen. Gary is survived by his wife, Deb Haper; two daughters, Anna and Elizabeth Haper; his parents, Tony and Loretta Haper; a brother **Steve '76** (Glenda Bremer) Haper; three sisters, Kathy Dan Huntimer) McBride, Deb Smith and **Diane '80** Haper; nieces and nephews and many other friends and relatives.

**Mark Lloyd '85** died January 31, 2015 from pancreatic cancer. After graduation he attended Western Iowa Tech in Sioux City. He worked as the service manager for Billion Automotive stores in Sioux Falls and Sioux City. Mark married Sally Deutsch in September 1989. The couple lived in Ellsworth until 1996 when they moved to Brandon, SD. Mark is survived by his wife, Sally; three sons, Austin (Shannon Klaassen), Collin (Same Rote) and Aydin. A brother Joe (Kristi) Lloyd, three sisters, Penni (Brent) Gilbert, Julie (Marc) Mozak, and **Susan '82** (Tim) Middagh, and many other friends and relatives.

### 1990-1999-

**Nathan O Skattum '91** died January 22, 2015, at his home with his family by his side. Nate furthered his education by attending Worthington Community College. He then joined his father to operate the family business, Skattum's Confinement Systems Inc. He married Mandy Ann Walgrave on March 18, 1995. They made their home in Luverne. He continued to work with his father to grow the business. He cared deeply about his customers and employees and worked hard to serve them. Nate was also active in the community, announcing high school wrestling duals and hockey games and being willing to lend a hand whenever needed. He served in the Knights of Columbus and was a member of First Farmers and Merchants National Bank Board of Directors. Later in life he found pleasure in golfing, playing in the Wednesday men's league and catching rounds with his sons whenever they could fit them in. Nate is survived by his wife **Mandy '95**, three children, **Reed '13**, Allie and Max; his parents, **Thomas '69** and Nancy **Skattum '69**; two brothers, **Matthew '94** (Nichole) Skattum, and **Zachary 01** (Jennifer) Skattum, and many other family and friends.

---

## Betty Mann 85th birthday for History Center/continued from page 12

*teacher. When she retired, she jumped into volunteer positions in the community and has never looked back. There is no one who is more giving and supportive of all of the work done within Luverne and Rock County. Help us make her dream come true...for her 85th birthday!*

*There are 3 ways for you to participate (all donations are tax deductible and will be matched on a dollar for dollar basis by our anonymous donors):*

1. *Mail a card and contribution to her home:*  
Betty Mann, 213 Cashin Drive, Luverne, MN 56156.
2. *Send a card and contribution to the Rock County Historical Society:* Betty's Birthday, 123 North Freeman, Luverne, MN 56156. (Make check to Rock County Historical Society)
3. *Send a card and contribution to Luverne Area Community Foundation:*  
LACF-History Center (Betty's Birthday), PO Box 623, Luverne, MN 56156.



### **Dale L. Haggard Memorial Scholarship**

*This scholarship, in memory of Dale L. Haggard, was established by his 2 daughters, Jane and Martha, and his 2 sisters, Winifred Haggard (1950) and Helen Haggard Rollag (1954).*

*Dale was born and raised in Luverne. He was a 3-letter athlete in high school. He even received a letter of intent from the University of Minnesota to play quarterback for the Gophers. Unfortunately, during the last game of his senior year, Dale suffered a career-ending and possibly fatal blow to his head. Amazingly he survived and went on to receive his Doctor of Veterinary Medicine degree from the U of MN in 1959.*

*While in college, he married his high school sweetheart, Sonia Turner (1951). After graduation, Dale returned to Luverne and took over his Grandfather's practice. Dale was a 3<sup>rd</sup> generation veterinarian. A few years later, he partnered with Milo Kontz until he moved on to research in 1969. Eventually, he was offered a professor position at the University of Minnesota where he finished his veterinary career.*

*Dale passed away on November 27, 2013. He was preceded in death by his father Dr. Leon Haggard, DVM (1931), son John, wife Sonia and mother Jessie Haggard (1930). When possible, this scholarship is to be awarded to a student going into Animal Science, Veterinary Medicine or a Veterinary Assistant Program.*

### **Attention Class of 1977!**

*A challenge has been initiated by one of your classmates to raise enough money to create a Class of 1977 Scholarship with Luverne Dollars for Scholars. A minimum of \$2,000 is required to start this perpetual scholarship. Donations can be mailed directly to Luverne Dollars for Scholars at PO Box 822, Luverne, MN 56156. Please include "Class of 1977" on the memo line of your check. All donations to Luverne Dollars for Scholars are tax deductible. We will update you on the balance of donations received in the next issue of Alumni News. Good luck!*



## **Interested in creating a Dollars for Scholars Endowment?**

A gift of \$2,000 or more creates a perpetual scholarship with Luverne Dollars for Scholars. With a perpetual scholarship, only the interest earned during a one-year period of time is awarded each and every year thereafter to a most recent LHS qualifying graduate. The donor of such a gift is given the opportunity to name the scholarship. The scholarship is also included in the annual Luverne Dollars for Scholars Community Scholarship booklet. Not only does this booklet list the LHS graduates with their awarded scholarships, but it also includes a short write-up of each and every perpetual scholarship. The uniqueness of establishing a perpetual scholarship is that it allows a scholarship to be given each and every year, forever, to a fresh qualifying LHS graduate. Luverne DFS is recognized by the IRS as a 501(c)(3), therefore all gifts are tax deductible. You can contact Johnna Ahrendt at 507-227-4030 if you are interested in establishing a perpetual scholarship with Luverne Dollars for Scholars or email her at [luvernedfs@gmail.com](mailto:luvernedfs@gmail.com).



# Reunions in the Making

Class of '60—55th Class Reunion  
June 5-6, 2015

*Join us for a great celebration of our  
55th Class Reunion  
on Buffalo Days Weekend!*

Contact: Dave Smith, 405 S. Fairview  
Dr., Luverne, MN 56156 507-283-2877  
Or email: truffles@iw.net

Class of '65—50th Class Reunion  
September 25-26-27, 2015

*Save the weekend of Tri-State Band Festival to  
celebrate our 50th Class Reunion.*

**Contacts:**

Jeanne (Boone) Bowron 507-283-8136  
or jrbowron@gmail.com  
Randa (Smith) Gangestad 507-283-  
8288 or randagangestad@hotmail.com

Class of '70—45th Class Reunion  
August 15, 2015—6 pm  
Potluck Picnic "Reunion"

In Tanya (Leicher) Light's backyard  
at 501 Phyleon Dr.

Bruce Kurtz with Growing Up On a Gravel  
Road (Class of '70 Edition "Darlene's Bend,  
etc., etc.") and music to follow!!



Watch your mail for your  
invitation and evening  
special events!

Check out the LHS Class  
of '70 Facebook Group for  
news and updates!

Bonnie (De Booy) Kochel—Tanya  
(Leicher) Light—Mary (Connell) Steerman  
Email RSVP: mbsteerman@msn.com

Class of '80—35th Class Reunion  
July 16-18, 2015  
(Official Reunion July 18th)

Golf Friday afternoon

Contact Brian DeJongh

605-360-7265 or

briandj@sio.midco.net or

Terri (DeBates) Siebenahler

507-920-5085

**More info coming!!!!**

Class of '85—30th Class Reunion  
Reunion Dinner—Saturday, June 6, 2015  
6 pm—Howling Dog Saloon  
\$20/person (pork dinner)

Reservations & payment to Dan Pick, 309 North  
Freeman, Luverne 56156 by May 15th

Join us at the Cruise-in—Friday, June 5  
By the Beer Garden

Tables Reserved! Live music, food &  
beverages available!

Golf Outings Scheduled—Contact Jeff  
Hicks or Todd Flatequal  
jdhicks5@gmail.com or  
todd.flatequal@dmsghg.com

[http://www.alumni-class.com/luverne/  
reunion-class-of-1985?r=79380](http://www.alumni-class.com/luverne/reunion-class-of-1985?r=79380)

Class of '95—20th Class Reunion  
July 24-25-26, 2015

Kim (Schmuck) Stegenga  
507-920-9243

Jodi (Kunkel) Reverts 507-227-0817



**Alumni News Staff:** Cindy Arends, Gregg Gropel, Jane Wildung Lanphere, Jessica Mead, Carol McDonald, Patti Kirby Pierson, Rock County Opportunities and Lori Sorenson.

**1304145**

Volume 25 Issue 3

**Alumni News**  
709 North Kniss Avenue  
Luverne, MN 56156

**Luverne**  
*Love the life!*

**Change Service Requested**

Non-Profit  
Organization  
US Postage Paid  
Luverne, MN  
Permit No. 115

Place Label Here