



## ***As Luverne School District starts its 2019-2020 building project, Alumni News looks back on the high school's construction on Highway 75 in 1953***

Recently, Luverne School District #2184 residents passed a \$30 million bond issue to remodel and renovate the Luverne Middle – High School Building and to construct a new performing arts center. This article features the decisions made in the 1950's to build the new school that is now getting a "face-lift."

In the 1950's, the real reason for the building project was to have enough space for the growing school enrollment due to the closing of rural district schools and the baby boom generation. Enjoy this article that picks up where the January 2019 edition of Alumni News left off.

### **ROCK COUNTY STAR HERALD – October 1, 1953**

#### ***"Consolidation Vote Carries 147 to 107 Here"***

"By a vote of 147 to 107, the residents of 11 rural school districts in the Luverne area voted to consolidate with the Luverne district, Independent District No. 2 Tuesday night.

A total of 256 voted, 85 more than voted in a similar election July 9, when the count was 86 in favor and 85 against. That vote was not accepted by the Luverne board because of its closeness.

The Luverne school board will meet early next week to accept or

reject the vote. If they vote to accept it, and it is expected they will, the county superintendent will order the consolidation of districts No. 3, 4, 10, 11, 12, 13, 28, 43, 50, 59 and 74 with the Luverne district.

A spokesman for the school board informed the Star-Herald that the future steps to be taken are as follows:

1. Rural school districts involved in the consolidation will elect from their own residents delegates to serve on an advisory committee to determine



# Honor Roll of Alumni News contributors

Compiled by Johnna Ahrendt

During this past quarter ending March 31, 2019, the Alumni News received money in the form of memorials, and gifts totaling \$1,945. In the memorial section below, the individual being memorialized is printed in bold print, followed by the individual or individuals who made the gift. Contributions given by graduates and friends follow the list of memorials. THANK YOU, READERS!

## NOTE:

If you have recently made a contribution to the Alumni News and your name does not appear on this page, please let the staff know. Chances are your contribution was received after this page was compiled. Please watch for the next issue, July 2019, for additional names of Alumni News contributors.

Memorials and contributions may be sent to:

*Alumni News*  
709 N. Kniss Avenue  
Luverne, Minnesota 56156

Balance 12/31/18 \$802.56

Donations: 1,945.00

DFS Support: 1,550.00

Expenses:

Printing: 919.08

Postage: 1,396.82

Labels: 698.71

Office Supplies: 10.00

Paypal Fees: 11.96

Balance 3/31/19 \$1,260.99

## Memorials

**Loretta (Kemerling) Hamann '27**  
Gordon '61 & Betty (McClure)  
'54 Hamann

**Gloria (Anderson) Shaffer '43**  
Audrey (Conrad) Gabrielson '43

**Elzora (Wulf) Ott '46**  
Winifred Haggard '50

**Leo Berning '47**  
Betty Mae (Berning) Serie '52

**Donald Hamann '51**  
Gordon '61 & Betty (McClure)  
'54 Hamann

**Geraldine (DeVries) Hamann '51**  
Gordon '61 & Betty (McClure)  
'54 Hamann  
Lowell '51 & Claudette Thone

**Ronald Hamann '51**  
Gordon '61 & Betty (McClure)  
'54 Hamann

**Walter Baustian '52**  
Pat '81 & Kathryn (Connell) '86  
Baustian

**Robert VandenHoek '66**  
Scott '66 & Kathleen  
(VandenHoek) '67 McClure

**Mike Wessels '67**  
Eleanor (Rober) VanGuilder '59  
Jason & Kami (Hatting) Adams  
'91  
Kathie (Rober) Erickson '64  
Keith '49 & Betty (Hansen) '50  
Luethje

**Norman "Pete" Christensen '70**  
Becky (Christensen(Weinkauf))  
Roberts '74  
Class of 1970  
Rick '70 & Carol (Schumacher)  
'70 Serie

**Don Maras '73**  
Betty (Hitch) Schnettler '73  
Dawn Maxwell '73

**Clara Ethel Getman - Friend**  
Eleanor (Rober) VanGuilder '59  
Kathie (Rober) Erickson '64

**George Mann - Friend**  
Gene Salzman '54

**Gladys "June" Mann - Friend**  
Gene Salzman '54

**Roger VanRoekel**  
'55Lorraine (Dreessen)  
Crouch '55

## Contributions

Betty (Wulf) Justin '46  
Carmen Priesz '61  
Carol (Steiner) Beck '66  
Debbie (Swenson) Anderson '70  
Eleanor Siebert - Friend  
James Ahrendt '59  
Jim Petersen '73  
John Remme '56  
Keith Loger '69  
Laurie (Carlson) Bailey '72  
Marilyn Bloemendaal - Friend  
Marvin Kindt '46  
Mavis (Winge) Amundson '50  
Pastor Andrew Hermodson-  
Olsen '78  
Penny Krogmann '67

## Thank you for your support

There are expenses incurred with printing, mailing and database support, and these costs are paid for with generous contributions from our alumni and readers.



# Luverne Dollars for Scholars.....Did you know?

The Luverne Dollars for Scholars Chapter is a non-profit organization involving local volunteers who are interested in providing local students with financial assistance to pursue higher education.

All of the funds raised by Luverne Dollars for Scholars remain in the community and are awarded to Luverne High School graduates.

The purpose of the program is to raise money for a permanent endowment fund and to annually disperse its income in the form of scholarships to Luverne High School graduates.

Since its origin in 1983, Luverne Dollars for Scholars has awarded a total of \$4,170,475 to 1,805 LHS graduates.

It is not just the big donors who are the heart and soul of this organization. It's the countless

individuals, including LHS Alumni, who have given donations ranging from \$5 to \$50,000 who have filled the organizations coffers.

Since its inception, the Luverne Dollars for Scholars program has been the benefactor of 249 perpetual scholarships with a total endowment of almost \$9.0 million.

The uniqueness of an endowment gift is that it allows a scholarship to be given each year and every year, forever, to a fresh qualifying LHS graduate.

Gifts of \$249 or less are placed into the general fund. No designation is made on a scholarship. Gifts that are greater than \$249, but less than \$2,000, are also placed into the general fund. With this type of gift, the principle amount is dispersed as a one-time scholarship, and the name requested by the donor is attached

to such a scholarship. A gift of \$2,000 or more becomes a perpetual scholarship.

With a perpetual scholarship, only the earnings during a one-year period of time are awarded each and every year thereafter to a most recent LHS qualifying graduate. Incidentally, additional amounts may be added to a perpetual scholarship at any time.

If you would like to contribute to, or receive more information, please write:

Luverne Dollars for Scholars  
PO Box 822  
Luverne, MN 56156

Email: [luvernedfs@gmail.com](mailto:luvernedfs@gmail.com)

Call: 507-227-4030 (Johnna Ahrendt)

Or visit: [www.luverne.dollarsforscholars.org](http://www.luverne.dollarsforscholars.org)

## Luverne school project in 1953/continued from page 1

what the district will required in the form of new facilities.

2. When this has been determined, an architect will be called in to discuss the building requirements.
3. When the requirements have been determined, the architect will draw plans and specifications for the new building and determined the approximate cost of the building.
4. A bond election will then be called for, to raise the necessary funds required to building the new facilities. If the bond issue is approved, then a call will be submitted for the sale of bonds, after which contractors will be asked to bid on the new construction.

It is hoped by the local school board that this call for bids can be made early next spring and that construction can begin next year. If that is possible, the board feels that the new building will be ready for use in September, 1955."

*"The gymnasium with a full stage on one end will seat 2400 persons and can be divided into two gyms with an electronic controlled sound proof door so that the two physical education classes can be held at the same time independent of each other.."*

— *Rock County Star Herald*  
March 11, 1954

**ROCK COUNTY STAR HERALD –  
January 7, 1954**

"School officials here were given a preview of building plans for Luverne's new school building Thursday.

The Luverne school board and the 11-member advisory board (comprised of one representative of each rural district which consolidated with the Luverne

district last fall) met with Al Wegleitner representing the firm of Hubert Swanson, architect, Minneapolis, in a discussion of the preliminary blue prints of the proposed new senior-junior high school building.

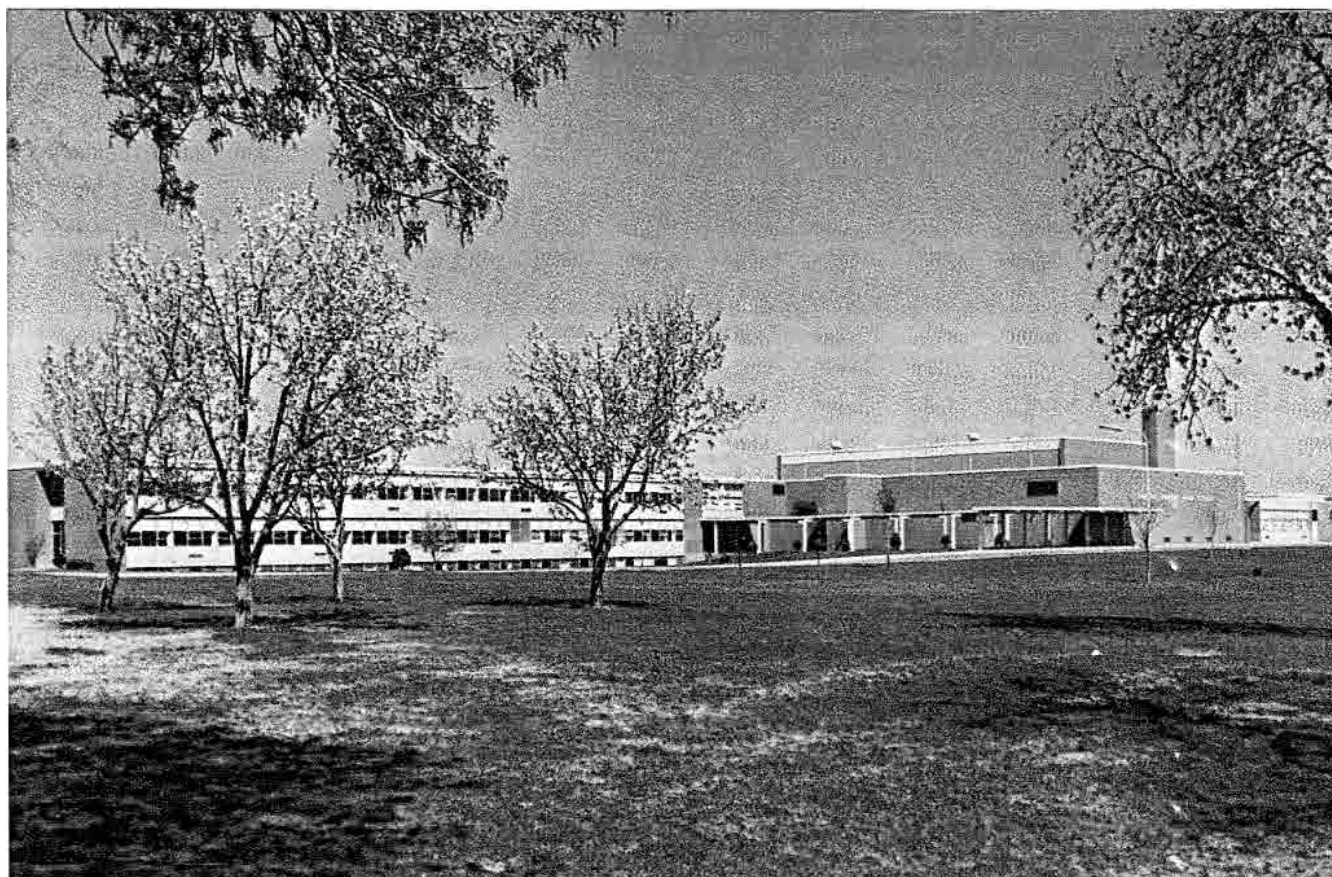
Various changes and suggestions were made by school board members and the architect explained each phase and the various room designs, locations, etc. with the board members.

Another meeting is scheduled Thursday (tonight) at the Luverne high school when the Luverne school board will discuss the plans further and may possibly vote to either accept or reject the plans for the new school.

School board officials estimate that following a favorable bond vote approval by the votes of Luverne and the rural school districts, the earliest possible date for the letting of bids would be September, 1954.

Actual construction might begin in late September 1954 with a probably completion date in September or October, 1955."





High School Building, Luverne, Minn.

1956

## Luverne school project in 1953/continued from page 3

**ROCK COUNTY STAR HERALD – January 14, 1954**

### *Board Accepts Plans*

"The board voted to accept the plans with changes and alterations as proposed. The final preliminary plans will again be submitted to the Luverne school board in about six weeks.

The plans for the new school call for a two-story building with all modern facilities for classrooms. One single-story wing of the building has been devoted to shops.

The building will be located on the former Bonthius property at the northwest edge of Luverne on land which was purchased by the Luverne school board and approved by the voters of Luverne (in a special election held in August, 1952).

One of the interesting features of the new school building will be the gym which can be divided by the use of folding doors so that both boys and girls can use it at the same time for physical education classes.

Before the actual building construction can start, the architect must present the plans to the state department of education for their approval. The state fire marshal, the department of health and safety are among the state agencies who will inspect the plans and make recommendations.

Following the return of the plans here in about six weeks and assuming that the Luverne school board approves the final preliminary plans, then the next step will more than likely be the bond issue on which votes of Luverne and the 11 rural school districts will vote."

**ROCK COUNTY STAR HERALD – January 28, 1954**

"A revised set of preliminary plans for the new school building in Luverne is expected to be received here next week.

The preliminary plans for the new proposed junior-senior high school are now in the hands of Al Wegleitner, architect presenting the firm of Hubert Swanson, architect, Minneapolis, following two discussion meeting here last Monday and Tuesday with the rural advisory committee and the Luverne School Board.

The preliminary plans include a number of minor changes and revisions which were suggested by the Luverne school board and the rural advisory group, which represents the 11 rural school districts which consolidated with Luverne.

The architect will now go ahead and make up another new set of preliminary plans incorporating the proposed changes and revisions and submit them to the school groups here for further study.

The architect has also been getting ideas about what model rooms and departments should look like and what they school include, from the persons who will spend the greatest length of time in the rooms...the teachers.

At least 12 teachers representing grades seven through twelve have submitted sketches and plans on their individual ideas of what their particular rooms should look



# What We've Heard ...

Compiled by Jane Wildung Lanphere

## *Let's Hear from YOU!*

Come on, Luverne High School alumni. Where's your news? We didn't receive any "What We've Heard" submissions this quarter, and we know it's not for lack of news to share. The Alumni News is your publication, written for you and about you. Please reach out to your fellow alumni and let us know what's going on in your lives.

Let us know what you are doing and we'll pass it on to other alumni. Include your **name, year of graduation, address, phone number and email** (also let us know if you would like your email in our directory of alumni).

Send your news to:

**Alumni News  
709 N. Kniss Avenue  
Luverne, Minnesota 56156**

Or email [luvernechamber@co.rock.mn.us](mailto:luvernechamber@co.rock.mn.us)

## Luverne school project in 1953/continued from page 4

like and include for their particular department.

As these sketches have been submitted, they have been mailed direct to the architect for his study so that he may include some of their suggestion and ideas in the preliminary (revised) plans which he will submit next week.

And while all this has been going on, the architect has been meeting with various state departments at St. Paul to mull over the plans for the Luverne school.

Before the second preliminary plans are submitted here the architect must meet with the various state departments to go over each aspect of the new school. The same procedure will take place for new plans whenever they are submitted.

There has been a good deal of checking, cross checking and suggestions for revision in the preliminary plans to insure the best possible school that money can buy and at the least possible cost.

Following the submitting of the second set of preliminary plans and their subsequent revision (if any), the plans will then go to the architect again and once again he will meet with state departments to go over the plans in minute detail.

Following this meeting the architect will then present the plans to a draftsman and the plans (still preliminary) will be drawn up according to scale with all equipment included in the sketch and submitted here for final study.

These will be the final preliminary plans. These plans will be accompanied by an architect's drawing of what the school will look like from the outside.

The Luverne school board will then vote whether or not to accept the preliminary plans. School officials estimate that they will have the final preliminary

plans about ten days after the second set of preliminary plans have been sent to the architect. This would be about three to four weeks from today.

The new school will accommodate approximately 900 students with ample room for expansion and to take care of the increasing enrollment trends which has caused the need for the new school in the first place.

Under this plan, which the voters of the Luverne school district and the 11 rural school districts will decide in a bond election at a later date, the new junior-senior high school unit will be built and the present Luverne high school will be remodeled into a grade school.

The architect has presented a set of plans for the remodeling of the present high school into a grade school.

This would include two kindergarten groups on a half day basis and would include grades one through six in the same building.

The changes in the present Luverne high school into a grade school building would not have to be too drastic, it was reported. These changes could be made during the summer vacation. "

### **ROCK COUNTY STAR HERALD – February 25, 1954**

#### **VOTE ON SCHOOL BONDS –**

#### **To Cost About \$22.30 For Each \$1,000 Assessed Valuation**

"Voters of Consolidated School District No. 80 on March 26 will be asked to approve a bond issue of \$1,520,000 to pay for the construction of a new junior-senior high school. Included in the bond figure is the cost of remodeling the present Luverne high school into an elementary unit.



# Remembering our Classmates

*Compiled by Carol Schumacher Serie*

## 1930 -1939

**Ruth (Holling) Dorsey '39** passed away on January 22, 2016. She was married to her husband, Dean, for 68 years. Ruth retired from the Union Pacific Railroad as an Operations Manager after starting as a secretary and moving into management.

Ruth is survived by her husband Dean of San Ramon, CA; daughters Linda Vernon of Pleasanton, CA, and Pam (Don) Knotts of Castro Valley, CA; her brother, Lloyd Holling of Florida; four grandchildren and one great grandchild.

**Florence (Carlson) Connell '39** died February 8, 2019, at her home. In October 1947 Florence married **Jim '36** Connell and they raised their family in Kansas City, MO, where she had many friends, loved golfing, playing bridge and being with family.

Florence is survived by four children, Elliot (Marty), Lee's Summit, MO, Keith (Bonnie), Leawood, KS, Connie (Kevin) Fahey, Leawood, Kevin (Nancy), Leawood; 10 grandchildren and 16 great-grandchildren. She was preceded in death by her husband Jim, eight siblings, and a grandson.

## 1940 -1949

**Helen (Tobiason) Kruger '42** died on January 18, 2019, in Luverne. Helen married Alvin Kruger on April 18, 1945. The couple lived near Jasper, Beaver Creek, Sibley, IA, and Kenneth, MN. In addition to helping on the farm, Helen worked at the Blue Mound Inn and Magnolia Steak House. In 1983 they moved to Magnolia, and she eventually became a resident of the Mary Jane Brown Home in Luverne.

Helen is survived by four children, Janice Flowers of Lake Crystal, MN, Karen (Gene) Rosenberg of Luverne, Judy Kruger of Luverne and Eldon (**Becky '79**) Kruger of Magnolia; daughter-in-law Deb Kruger of Worthington; 10 grandchildren; 19 great-grandchildren; several step-grandchildren; and extended family and friends. She was preceded in death by her husband, Alvin; two sons, Loren and Dale Kruger; son-in-law, Don Flowers; two brothers, Alfred and Gordon Tobiason; and two sisters, Mabel Oldre and Ida Enger.

**Edwin D. "Bud" Oakland '43** died March 3, 2019. Bud served in the Navy from 1944 to 1946 and married Evelyn Bisch on August 22, 1947. They moved to Coeur d'Alene, ID, in 1951. Bud retired after 26 years as an insurance agent.

Bud is survived by his wife, Evelyn; son, Charles E. (Linda) Oakland; daughter, Rebecca (Ken) Clegg; two grandchildren; and four great-grandchildren. He was preceded in death by his sister, **Audrey '45** Wildung and brother **William '49**.

**Donald Schmuck Sr. '45** died November 14, 2018, in Ellsworth, MN. Don married Viola Stuckenbroker on May 7, 1947, in Luverne. He worked for A.R. Wood and McClure Plumbing. The couple moved to Minnetonka in 1981, where they managed a condo for ten years. In 1991 they retired and moved back to Luverne.

Don is survived by four children, **Don '65** Schmuck Jr., Omaha, NE, **Marilyn '67** Schmuck, Luverne, **David '70** (Ava) Schmuck, Fairview Heights, IL, and **Doreen '73** Milstead, Kingston, WA; five grandchildren; eight great-grandchildren; a brother, Wallace (**Verna '48**) Schmuck, Luverne; and a sister, **Judy '58** (**James '57**) Hagen, Sioux Falls, SD. He was preceded in death by his wife, Viola; a son, Dennis; a great-grandchild, Heidi Milstead; a sister, **Helen '41** Gamsby; and three brothers, **Herbert '41**, Henry and Robert.

**Arlyn C. Hemme '45** died on April 2, 2019, in Luverne. Arlyn served in the Navy through 1947 and then enrolled at the University of Minnesota. He married Gladys Bakke on September 10, 1950, in Jasper, MN. They moved to Cross Lanes, WV, where he worked for Union Carbide as a Chemical Engineer. In 1996 they bought retirement property on Lake Mina, near Alexandria, and in 2006 Arlyn and Gladys returned to Rock County. Arlyn became a resident of the Minnesota Veterans Home in 2018.

Arlyn is survived by four children, Diane, Ladera Ranch, CA, Dwight (Audrey), Chaska, MN, James, Cross Lanes, WV, Douglas (Jenny), Pittsburgh, PA; and five grandchildren. He was preceded in death by his wife, Gladys; infant daughter Deborah; and two brothers, Glenn (Irene) and Russell (Elsie).

**Elzora (Wulf) Ott '46** died March 21, 2019, in Luverne. Elzora was united in marriage to **George '41** Ott on June 8, 1948, in Luverne. They lived on a farm north of Luverne until 1957 when they moved to Luverne. She did child care and seamstress work for others.

Elzora is survived by four children, **Carleen '67** (**Michael '67**) Bakalyar, Quincy, IL; **Harlan '68** (Carrie) Ott, Spring Lake Park, MN; **Nelva '69** Boergerhoff, Tequesta, FL; **Janet '70** (Paul) Ruble, Elk River, MN; nine grandchildren, eighteen great-grandchildren, six siblings, **Naidine '48** Aanenson, Luverne; **Audrey Mae '48** Munro, Sioux Falls, SD; **Donald '52** (Lola) Wulf, Sioux City, IA; **Henry '54** (Loretta) Wulf, Brainerd, MN; Ruth (Alan) Hendrickson, Citra, FL; and **Gordon '61** (Patricia) Wulf, Wellston, OK; two sisters-in-



## Remembering our classmates/continued from page 6

law, Ruby Wulf, Chula Vista, CA; and **Carol '59** Wulf, Luverne. She was preceded in death by her husband, George; two brothers, **Franklin '50** and **Arthur '58**; and a sister, Leila.

**Betty (Goettsch) Gruber '47** died March 6, 2019, in Luverne. Betty married Alvin Gruber on August 7, 1950, in Hardwick. Betty began working as a telephone operator for Northwestern Bell following high school and continued with the company until retiring in 1985. Career opportunities took the family from Luverne to Colorado, New Mexico and Texas. Betty moved back to Luverne in 1990.

Betty is survived by a sister, **Marlene '56** Dagel, Fort Worth, TX; a brother, **Dale '55** (Millie) Goettsch, New Brighton; a sister-in-law, Carol Goettsch, Circle Pines; and many nieces and nephews. She was preceded in death by her husband, Alvin; and a brother, **Arland '50**.

**James B. Welch '48** passed away on January 20, 2018, in Duluth, MN. Jim enlisted into the US Army where he played the saxophone in the Army Band. He graduated from the University of Minnesota School of Pharmacy in 1955. On August 18, 1951, Jim was united in marriage with Dolores Williams. He owned and operated Mesaba Drug in Hoyt Lakes since 1974.

Jim is survived by his children: Nancy (Mike) Radtke, Hoyt Lakes, Debra (John) Prokosch, Lake Elmo, MN, Patricia Connett, Woodbury, Thomas (Tracy) Welch, Hoyt Lakes, William (Robin) Welch, Norco, CA, Renee (Mitch) Ronning, Hoyt Lakes, Tim (Dania) Welch, Half Moon, NY, Dan (Janet) Welch, Kingston, Springs, TN, Mary (Vincent) Fossell, Hoyt Lakes, and Jennifer (Ryan) Pickard, Kent, IL; thirty-one grandchildren; twenty-five great-grandchildren and two great-great-grandchildren; a sister Jeannie (Roger) Balcer, Effingham, IL; brother Dennis (Leslie) Welch, Brea, CA; and sister-in-law Nori Duchene, Yankton, SD. He was preceded in death by his wife Dolores; a grandson, a granddaughter; brother **Richard '44**; son-in-law Steve Connett; and sister and brother-in-law **Alice '41** and Irv Davis.

**Norman Ahrendt '48** died March 7, 2019, in Park Rapids, MN. Norman attended Worthington Junior College, Augustana College, Sioux Falls, SD, and Mankato State University. On June 24, 1951, he was united in marriage to **Jean '48** Juhl. He taught and coached in Slayton, MN, and then became principal of Inver Grove Heights Junior High School. Norman served in the Korean War. He earned the rank of Major in the National Guard, retiring in 1968. Norman and Jean retired to a lake home at Hackensack, MN.

Norman is survived by children: David (Mary) Ahrendt of Park Rapids, Dr. Mark (Dr. Madeline Gartner) Ahrendt of Valley Center,

CA, Christine (Arne) Haugen of Oslo, Norway, Nancy (Robert) Hammerstrom of Akeley, MN, and Thomas (Angela) Ahrendt of Nevis, MN; 14 grandchildren; three great-granddaughters; one brother, **Ronald '50** (Lois) Ahrendt. Norman was preceded in death by his wife Jean; one granddaughter and one great-grandson.

**Ramona (Aanenson) Skidmore '49** passed away March 3, 2015. Ramona married Bill Skidmore in 1954 and later moved to Blaine, MN. She worked as a secretary as well as a nurturer to her family. Ramona lived in Spooner, WI, since 2009.

Ramona is survived by her daughter Lori (Joe) Messner, son Bill (Shannon), grandchildren; and great-grandchildren. She was preceded in death by her husband Tom Benes; and son Mark.

### 1950 – 1959

**Geraldine (DeVries) Hamann '51** died September 25, 2018, in Bloomington, MN. She married **Ron '51** Hamann on August 5, 1952, in Luverne. Most of their 61 years of marriage were spent living in Bloomington, MN. Gerri was a homemaker and used her talents as a speaker/soloist at many meetings and retreats.

Gerri is survived by four sons, Greg (Rita) Hamann, Bob (Kathy) Hamann, Randy (Peggy) Hamann, and Rich (Deb) Hamann; nine grandchildren; nine great-grandchildren; and, sister, **Eunice '48** Lowe. She was preceded in death by her husband, Ron, and two sisters.

**Gene Stanley Olson '51** passed away on February 1, 2019, in San Diego, CA. Gene enlisted in the U.S. Navy in 1951. He returned to Luverne where he began a career in insurance and then moved to Denver, CO, where he became a stockbroker. Gene retired to San Diego in 1987.

Gene is survived by his wife Dee; four children, Stephanie Wilbanks, David Olson, Thomas Olson, and Jennifer Taulbee; and ten grandchildren. He was preceded in death by two sisters; **Harriet '51** Hall and Leona Snell; three brothers; **Odin '41**, **Eldon '48** and Kenneth; and his son Steven.

### 1960 -1969

**Leon "Lee" Umland '62** passed away November 16, 2018. Lee served in the Army National Guard through 1965. He graduated from Mankato State College in 1967 and then worked in sales for Texaco. In 1975 he became self-employed opening Ace Sign Displays in South Sioux City and later expanded with Commercial Sign & Design in Storm Lake, IA. Lee and Sharon (Broecker) were married in



## Remembering our classmates/continued from page 7

---

1967 and worked in business together for 43 years.

Lee is survived by his wife, Sharon; son, Chad (Nicole) and three grandchildren; sister, **Ellen '66**, Rapid City, SD; sister-in-law, **Jean '61** Umland, Las Vegas, NV; brother-in-law, Jerry (Sherry) Broecker, Forest Lake, MN; and many more relatives and friends.

**Michael L. Wessels '67** died January 12, 2019, in Luverne. Mike attended Mankato State University after high school and served in Vietnam in the United States Army. He married **Carol '73** Van Engelenhoven on October 14, 1972, in Luverne. Mike worked at IBP before being employed as a custodian at the Luverne Public Schools and the First Presbyterian Church. He retired in 2012.

Mike is survived by his parents, Norman and **Joyce '47** Wessels, Luverne; two children, **Christal '91 (Dan '86)** Serie, Luverne; and **April '99** (fiancé, Nick Wassenaar) Sailor, Luverne; seven grandchildren; sister, **Linda '68** (fiancé, Richard Knapper) Schoon, Sioux Falls, SD; brother, **Mark '83** (Lin) Wessels, Rock Rapids, IA; a niece and two nephews. He was preceded in death by his son, **Andy '94**; and a granddaughter, Lucie Sailor.

**Patricia (Bode) Raabe '69** died on July 18, 2014. Pat was united in marriage with Ronald E. Raabe on September 4, 1970, in Luverne. They settled in Hartford, SD. Pat worked for 26 years with Sioux Falls Monument Company. She spent the last 14 years working as a customer service representative for Jordan Millwork.

Pat is survived by her husband, Ron, Hartford, SD; two daughters, Michelle (Chris) Kilbourn, Hartford, SD, Amber (**Cory '96**) Davis, Adrian, MN; four grandchildren; a brother, **Mike '72** (Rita) Bode; two sisters, **Mary '66** (Leon) Pick, Luverne, **Pam '72** Abell, Luverne; a brother-in-law, Dan (Kathy) Raabe, Omaha, NE; two sisters-in-law, Linda (Daniel) Ulmer, Menno, SD, Cindy (Brad) Shuck, Sioux Falls, SD; and extended family and friends. Pat was preceded in death by two brothers-in-law, Terry Baltzer and Gary Abell.

**Constance (Koelke) Nelson '69** died November 19, 2013, in St. Cloud, MN. Connie spent

15 years as a Human Services Technician at Project Turnabout in Granite Falls, MN.

Connie is survived by her husband Robert L. Nelson, Clarkfield, MN, and son Sean (Hannah) Swart, Green Cove Springs, FL, and their children, Ashley and Robbie; one grandson; sisters Marlene (Dan) Bredason, Appleton, MN, and Darla Moore, Montevideo, MN; and nieces and nephews.

### 1970 -1979

**Norman (Pete) Christensen '70** passed away on January 30, 2019, in Chillicothe, IL. He married Pam Petre on May 21, 1977, in Rome, IL. Pete worked for Hunsickers in Peoria for 39 years, and for the last few years he worked for Ingersoll Rand. Pete was the Mayor of Hopewell, IL, for 30 years.

Surviving are his wife, Pam; his son, Hans Lee Christensen of Peoria, IL; his step-son, Larry Burke of Pennsylvania; six grandchildren; two great-grandchildren; and five sisters, **Beverly '57** Kloostra, **Joann '59** Cortez, **Karen '68** Christensen, **Becky '74** Roberts and **Launa '80** Mongold. He was preceded in death by two sisters, **Marilyn** and **Judy**; three nephews; and two nieces.

**Mark Harrison '78** died January 18, 2019, at his home outside Snohomish, WA. Mark attended St. Cloud State University and then the School of Journalism at the University of Missouri, graduating in 1984. In that same year, he won the Hearst journalism award for photography. Mark married **Brenda '77** Mann on August 16, 1980. He worked for The Herald, Everett, WA, and then was hired as a photojournalist for the Seattle Times in 1986. He retired in 2015. Mark was known for his sports and nature photography and his ability to tell poignant stories through his images.

Mark is survived by his wife, Brenda, Snohomish; daughters, Elizabeth (Ian) Harrison DeVivi, Charlotte, NC, and Leah (Tom) Naccarato, Federal Way, WA; one granddaughter; sister **Diane '80** (Greg) Harrison Ogawa, Albuquerque, NM, and extended family.

Remembering our classmates/see page 9

---

## Online Alumni News

Have you checked out the Luverne Alumni News at [www.alumninews.info](http://www.alumninews.info) lately? You are able to read your Alumni News online. It is available to all those that have internet, let us know you would like to discontinue the hard copy to go green (save postal expenses and a tree). Email Patti Pierson [piersonprp@alliancecom.net](mailto:piersonprp@alliancecom.net).



## Remembering our classmates/continued from page 8

### 1980 -1989

**Jeffrey Dirks '80** died January 22, 2019, at his home in Mesa, AZ. After high school, Jeff moved to Garden City, KS, and married Laura Post in 1983. He had many hobbies including the martial arts, vehicle restoration, and home improvement.

Jeff is survived by his wife, Laura; his sons Blake and Cody (Crystal); his mother, Edna; his brothers **Mike '72** (Denice), **Steve '75** (Mo); his sister **Nancy** (Scott); and his wife's family: Doug (Kim), Greg (LeAnn), Roger (Ellie), Terry (Pam), Pat (Kent), Marg (Dallas), Gary (Bev), and extended family.

**Shane M. Klay '89** passed away on May 22, 2017, in Sioux Falls, SD. Shane married Michelle Bradwisch on November 9, 2001, in Sioux Falls. Shane was a "Mr. Fixit", a master of all trades, and loved gardening. He was fixing up an old farmhouse near Colton, SD, with his wife when he passed away.

Shane is survived by his wife, Michelle, Colton, SD; two daughters, Nicole Leinen, Marshall, MN, and Brittany (Brandon) Dufour, Nisswa, MN; two grandchildren; three step-children, Ashley (Christian) Arambula, Sioux Falls, Chelsea Isaacson, Sioux Falls, Joshua Isaacson and Chandler Zweggart, Sioux Falls; five step-grandchildren; his father, Duane (Sheri Padgett) Klay, Brandon, SD; his mother, **Donna '71** (Mike) Rank, Knoxville, IA; his grandmother, LillyAnn Sammons, Luverne; two siblings, **Josh '01** (**Dana '03**) Klay, Magnolia, MN, **Heather '92** (Dan) Vacura, Bloomington, MN; three step-siblings, Jo Davis, Brandon, SD, Amanda Deilke, Brandon, SD, Colton Padgett, Brandon, SD; and many other relatives and friends.

### 1990 -1999

**Eric Sammons '95** died January 17, 2019, in Sioux Falls, SD. Eric graduated from Brown Institute in the Twin Cities in graphic design in 1998. He moved to Hallendale, FL, and in 2004 returned to Luverne and worked at the Howling Dog Saloon and Papik Motors. He moved to Brownsville, TX, to work for the Panasonic company in 2009, but due to health

concerns, Eric returned to Luverne in 2011.

Eric is survived by his daughter, Ferynn Sammons, Harlingen, TX; his mother, **Mary '74** (Mike) McLaughlin, Luverne; his father, **Mike '73** Sammons, Round Lake; three siblings, **Chad '91** (Sara) Sammons, New Ulm, **Angela '98** (**Robert '98**) Sneller, Luverne, and **Lindsay '00** (Thomas) Jenniges, Ellsworth; and many other relatives and friends.

### 2000 – 2009

**Michael D. Voetberg '03** passed away on March 13, 2019. Michael worked at Glens Food Center in Luverne and then as a steel fabricator at Sudenga Industries in George, IA, for 12 years. Michael enjoyed touring New Zealand following high school, and had a great love for music, nature, saving the planet and feeding the hungry.

Michael is survived by his parents, Bryan and Donna Voetberg, Magnolia, MN; three brothers, Matthew, Luverne, Joshua, Magnolia, and Jeremiah, Magnolia; grandparents Arie and Marge Boon, Rock Valley, IA; many uncles, aunts, cousins and close friends. He was preceded in death by his grandparents and an uncle.

### 2010 – 2019

**Taylor Stratton '13** passed away on February 3, 2019. Following school, Taylor worked various jobs including waitressing at the Luverne Country Club and was employed as a youth counselor for Southwest Youth Services in Magnolia, MN. On April 22, 2014, Taylor and her partner, Nick Kellen, welcomed their son, Dominic into the world. The family made their home in Adrian, MN.

Taylor is survived by her partner, Nick Kellen, and their son Dominic, Adrian; parents, James and **Jennifer '92** Stratton, Luverne; siblings, **Britton '11** (Anna) Stratton, Plymouth, MN, **Bailey '14** (Cody) Penning, Magnolia, and Logan Stratton, Luverne; maternal grandparents, Jim and Gail Rust, Magnolia; paternal grandmother, Janice Stratton, Luverne; maternal great-grandfather, LeRoy Rust, Luverne; and many other family and friends.

---

**Are you getting more than one (1) Alumni News at your house?**

*If so, please call Patti Pierson at 507-669-2371 or email her at [piersonprp@alliancecom.net](mailto:piersonprp@alliancecom.net) with the correct postal and email address of your children. Thank you*

---



## Luverne school project in 1953/continued from page 5

The Luverne school board last week approved the final preliminary plans and also approved the bond issue and set the date for the bond election.

The cost of the school construction will be about \$22.30 per \$1,000 of assessed valuation each year. The bond retirement is based on a 30-year payment plan.

Al Wegleitner and Hubert Swanson, architects, presented the cost estimates for the proposed new building and the remodeling costs for the present high school building at the meeting of the school board and the rural advisory committee last week.

Estimates for maintenance, transportation, capital outlay and county one mill levy based on next year's enrollment estimates, call for a 25 mill rate on agricultural lands and a 46 mill rate on non-agricultural lands.

Thus, the people of Luverne would bear the greatest share of the operational costs of the schools. These figures may vary two or three mills either way, according to school officials.

School board officials expect to retire the bond debt over a 30-year period with a levy of 22.3 mills subject to interest rates secured at the time of the sale of the bonds. The total cost of the new school and the remodeling of the present high school into an elementary unit were estimated at \$1,720,000 by the architects.

The Luverne school board cut this figure to \$1,520,000 because of the \$200,000 which was in the Luverne school board treasury and which had been accumulated over a period of years.

The average Rock county farm with buildings is assessed at about \$3,500, according to Rock County Auditor Ray Koehn. The bond debt will be retired at an estimate levy of 22.3 mills.

The total valuation of the consolidated district amounts to \$3,406,489 which includes 11 rural school districts and the city of Luverne.

The breakdown shows that the total valuation of the 11 districts amounts to \$1,496,292 while the total valuation of Luverne is \$1,910,197.

The land the school will be built on is in the northwest corner of Luverne. The land, which amounts to 37 acres, was purchased by E. W. Brown for \$22,000 with an eye to offering it to the school board for further school use.

Growing pains have forced the school board into the realization that a new school building and a remodeled elementary unit was the only answer to the need to additional space for school children which is sure to increase steadily for the next 20 years."

*"Growing pains have forced the school board into the realization that a new school building and a remodeled elementary unit was the only answer to the need to additional space for school children which is sure to increase steadily for the next 20 years."*

*Rock County Star Herald  
Feb. 24, 1954*

### ROCK COUNTY STAR HERALD – March 11, 1954 SEVERAL GROUP MEETINGS HELD THE PAST WEEK

"Information meetings both in the rural districts and in Luverne are being held pertaining to the new school construction which voters of School District No. 80 will be asked to approve in a special bond election March 26.

Construction of a new junior-senior high unit and remodeling of the present high school into an elementary school will require a bond issue of \$1,520,000.

These group meetings are being held in the rural districts which consolidated with Luverne, preparatory, to a mass meeting which will be held at the Luverne high school auditorium next Thursday evening at 8 p.m.

Al Wegleitner, architect, and members of the Luverne school board and the advisory rural committee will be present to answer any questions pertaining to the school.

The architect is expected to talk briefly on the actual physical description of the school and the various departments and rooms it will include. The school board and other advisory members will be present to

answer any questions in financing, costs, mill rates, amount of taxes to be paid, etc.

The public is invited to attend this meeting and perhaps clear up any questions pertaining to the school construction programs. The school plans under consideration calls for a new modern type junior senior high school which will including the following:

Twenty regular classrooms, a library, biology room, physics and chemistry room, two general science rooms, two student activity rooms, one student room, one study hall, one agricultural room, an agricultural shop and industrial arts department including mechanical drawing room, metal shop, wood working shop and finishing room.

Plans also call for a visual aids room with a full stage capable of seating 400, a band room, vocal room, home economics department with sewing unit, homemaking unit and dining unit, guidance unit, nurses unit, necessary school offices, lunch room with kitchen and a health room.

The gymnasium with a full stage on one end will seat 2400 persons and can be divided into two gyms with an electronic controlled sound proof door so that the two physical education classes can be held at the same time independent of each other.

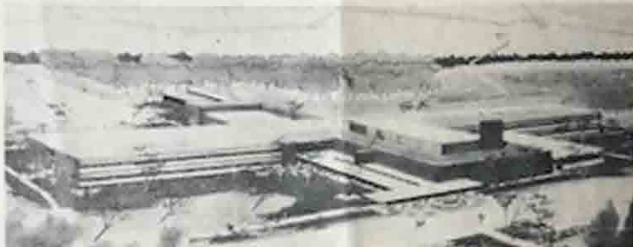
The junior high portion of the building will be located in one end of the new school and the senior high portion of the school will be located in another section of



# FOR BETTER SCHOOLS FOR OUR CHILDREN

# VOTE "YES"

## ON FRIDAY, MARCH 26, 1954



**WHY SHOULD WE VOTE ON FRIDAY, MARCH 26?**

Because the school board has decided to build a new school building on the site of the old school building.

**WHY CAN WE VOTE?**

Because we are the citizens of District 80 and we have the right to vote on the school bond issue.

**WHAT ARE WE VOTING FOR?**

We are voting for the school board to build a new school building on the site of the old school building.

**HOW WILL THIS MONEY BE SPENT?**

The money will be used to build a new school building on the site of the old school building.

**WHAT OTHER EXPENDITURES ARE INVOLVED?**

There is \$100,000 for the school building and \$100,000 for the school bus.

**WHAT IS TOTAL OF ALL THESE EXPENDITURES?**

The total is \$200,000.

**BUT THE BOND ISSUE IS ONLY FOR \$1,520,000—WHY THIS DIFFERENCE?**

The difference is the cost of the school building and the school bus.

**WHEN WOULD WORK START ON THE NEW JUNIOR-SENIOR HIGH SCHOOL BUILDING?**

Work would start on the new junior-senior high school building in the fall of 1954.

**WHEN WOULD THIS JUNIOR-SENIOR HIGH SCHOOL BE COMPLETED?**

The new junior-senior high school would be completed in the fall of 1955.

**WHAT WOULD BE THE NEXT STEP?**

The next step would be to build a new school building on the site of the old school building.

**WHY SHOULD WE VOTE YES?**

We should vote yes because we want a new school building and a new school bus.

**HOW MUCH "FAT" IS THERE IN THIS BUILDING PROPOSAL?**

There is no fat in this building proposal.

**THE NEED IS HERE NOW.  
THE WAY TO SOLVE THAT  
NEED IS TO BE SURE TO  
VOTE ON MARCH 26.**

**A VOTE "YES" ON MARCH  
26 IS A VOTE FOR PROGRESS  
AND BETTER SCHOOLS**

SCHOOL ADVISORY COMMITTEE OF DISTRICT 80  
AND FRIENDS OF BETTER EDUCATION

## Luverne school project in 1953/continued from page 10

the building. There will not be any mixing of both junior and senior high students going to and from classes. Each is separate and independent of the other.

An informational booklet has been prepared by the Luverne school board and the rural advisory committee which explains various phases of the construction program, taxes, enrollment trends, etc.

These booklets have been distributed at the groups meetings which have been held in the rural districts and will also be available to anyone who wants one. The booklets will also be distributed at the mass meeting next Thursday evening."

**ROCK COUNTY STAR HERALD – March 25, 1954**  
SCHOOL BOND QUESTION TO BE DECIDED FRIDAY  
Polls Will Be Open 9 a.m. To 9 p.m. At Luverne High School  
Gymnasium

"Tomorrow voters of consolidated school district

No. 80 will go to the polls to vote on the proposed bond issue for the new school construction.

Voters will be asked to approve a \$1,520,000 bond issue to finance the cost of a new junior-senior high school and remodeling the present high school into an elementary school.

Polling place will be at the Luverne high school gymnasium from 9 am to 9 pm Friday. The special bond election climaxes the work done in consolidation, reorganization and planning for the past two years.

Any American citizen who has been a resident of school district 80 for at least 30 days and resident of Minnesota for six months and is at least 21 years of age, is eligible to vote in the special bond election. Voters in 11 former school districts as well as voters in the city of

Luverne are eligible to vote in tomorrow's election.





## Luverne school project in 1953/continued from page 11

Teams, representing various civic and fraternal organizations in Luverne, canvassed most homes this week in an effort to get as much of the vote out as possible and answered any questions about the new school that were asked.

A heavy note was anticipated by observers due to the intense interest in the election. Voters could at least say that they would be going to the polls with plenty of information on the school set-up.

Informational meetings in both city and country have been held in the past two weeks. This was capped by a massed meeting which was held at the Luverne high school auditorium last Thursday night and was well attended.

**Ballots Easy To Understand** – The general feeling by many was that voters wouldn't have to study the ballot to determine what it was all about. Enough publicity has been projected before the voter to keep him fully informed with every practical method obtainable.

Ballots will be marked "yes" in favor of the bond issue and "no" not to favor the bond issue. The voter will designate his choice by marking an "x" in one of the blocks on the ballot. Results should be known late Friday night."

### ROCK COUNTY STAR HERALD – April 1, 1954 NEW SCHOOL APPROVED BY 5 TO 1 MARGIN

"Even the most optimistic wouldn't have predicted the tremendous vote of confidence the voters of Consolidated School District No. 80 gave the special bond election last Friday. A total of 1,813 voters trooped to the polls...1521 of them said "yes" and only 291 said "no". One ballot was spoiled.

The vote was one of the largest of its kind for a special election in the history of the community. School official estimated there are approximately 2,500 eligible voters in the district, so Friday's vote was cast by about 72 percent of those eligible.

By their approval of the bond issue, District 80 now gets the green light on a new junior-senior high school and the remodeling of the present high school into an elementary unit.

Immediately following the election and as soon as the results had been made official, the school board met in special session, accepted the vote and then notified the architect to complete plans and specifications for the construction.

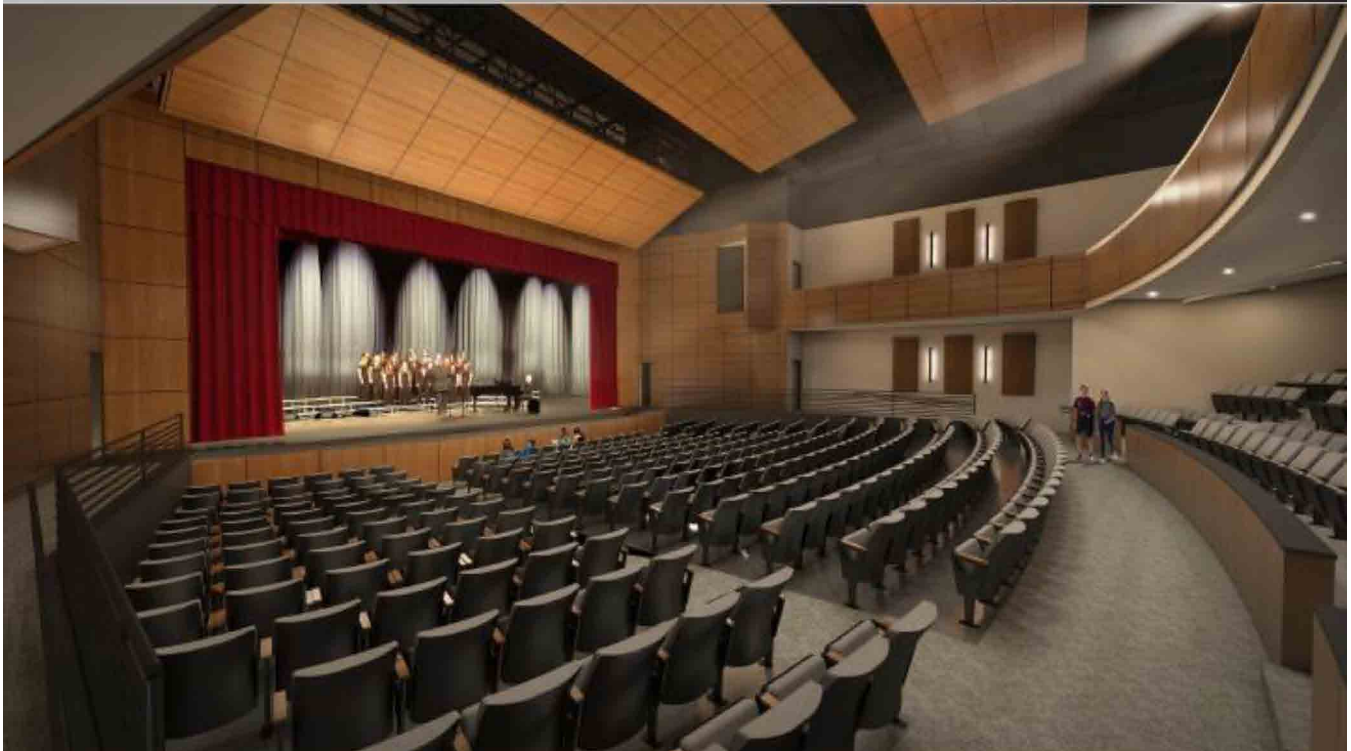
School officials estimated that it would take the architect at least four months to complete the building plans and specifications.

The day of the election this committee assigned each person a number of names of voters to get in touch with and remind to vote. Phone calls were made to voters in their homes, their places of business and at work.

How successful there were is reflected in the total number of votes cast; according to observers. Weather, which could have been a factor in the vote, was perfect. It was a warm, sun-shiny day with not a trace of a cloud anywhere.

Construction on the junior-senior high school is expected to start sometime this fall. The new school and the remodeled elementary school would be ready to occupancy sometime late in 1955 or early 1956, it was estimated."





The architect's drawing of the new school performing arts center was revealed at the March 1 Gala for LIFT (Luverne Initiatives For Tomorrow). This spring, 518 theater seats were removed and other preparations completed to transform the former Luverne Middle-High School auditorium, more commonly known as the Little Theater, into the new band and choir suites. Work began in earnest in February on the planned \$30 million building project that includes an \$8 million performing arts center. The project is scheduled to be completed in late 2020.

## Performing arts center drawings revealed in March

By Lori Sorenson

The March 1 LIFT Gala drew 175 people to Grand Prairie Events in Luverne where business leaders and organizations updated the community on the latest developments in town.

The night's agenda featured 13 local projects and undertakings that were highlighted during the two-hour program.

"All these positive things that are happening are because of the people involved in our community," said Luverne Mayor Baustian, recognizing the board members of LIFT — Luverne Initiatives For Tomorrow.

One revelation that drew crowd response was the architect's drawing of the fine arts center that will be completed with the school district's building project.

The auditorium will seat 500 on the main level and 250 in the balcony will support spaces for back stage, technical and other needs.

It will be located in the center of the campus, just off the new commons and cafeteria area that will occupy the current "link" area

between the elementary and high school buildings.

The current auditorium will become the music suite with increased space for band and choir, better storage for instruments and private practice rooms for students.

The current band and choir rooms will be the new weight rooms with better main-floor space and convenient location next to the high school gym.

District Superintendent Craig Oftedahl addressed the LIFT crowd Friday, thanking the community for its support of the building project.

When Luverne School District residents approved a \$30 million bond sale for building improvements, it passed on the first try with an overwhelming majority.

While it came as welcome news at the time, it turns out Luverne was an anomaly during 2017 when only 25 percent of bond issues passed in schools across Minnesota.

Of those, most were in the Twin Cities metro districts where farmland isn't burdened with paying for them,

and most had been rejected a time or two before passing on a third or fourth attempt.

"If you look at the list of projects that year, especially in greater Minnesota, you'll see how lucky you are," said Greg Abbott of the Minnesota School Boards Association.

Even though the bidding process required plan adjustments, Oftedahl said the district's goals have remained the same since 2016 when the School Board approved them.

1. Improve safety and security with the updated entry points and public areas.

2. Provide collaborative learning spaces to accommodate modern learning methods for students.

3. Provide a centralized commons "where people can eat and meet and not be in the basement," Oftedahl said.

4. Refresh and remodel the 1950s building. "It's strong, and it has a great backbone, but it's over 60 years old and it needs an update," Oftedahl said.

5. Build a new performing arts center to reflect the district's fine arts priorities.





The Rock County Senior Citizens revealed plans for a new gathering space this spring and announced they would known as “Generations” instead of “Senior Citizens” to attract younger retirees to the organization.

## Senior citizens creating new image with new gathering space

**By Mavis Fodness**

Luverne Senior Citizens President George Bonnema is on a mission to rebrand the image of the retired residents group.

The goal is to make the group more appealing and modern so that others — younger seniors in their early retirement years — will want to join.

A first step is to update and improve the group’s gathering space, the Senior Center on Lincoln Street near the Post Office.

“The term ‘senior citizens’ is outdated and doesn’t appeal to anyone under (age) 90,” Bonnema told Rock County commissioners at their Feb. 5 meeting.

“A new building will give us a new image. A new name will give us a new image in the community. We are trying to get that out there.”

He revealed architect drawings of

the new building’s exterior at Friday night’s LIFT Gala and announced an April 1 event to kick off a fundraising campaign to pay for the \$2 million facility. (See the related story.)

His meeting with County Board members on Feb. 5 was to request public funding.

In an hourlong discussion, Bonnema and his vice president, Renee Reu, outlined the history and future plans for an organization rebranding and remodeling a facility to meet the current needs of retired residents and the Rock County community.

Bonnema asked commissioners to commit \$150,000 to the estimated \$2 million project.

“We see potential in what we can do here,” Bonnema said. “A lot of things I can’t do without a new building.”

Almost 20 percent of the county’s 9,490 people are 65 and older, according to 2017 census figures. Currently 60 are members of the Luverne Senior Citizens.

Bonnema’s leadership group and building committee are exploring various funding options for a multi-function facility.

The facility will replace the former Lincoln Hotel currently used for office and meeting space and remodel the current attached senior dining hall with updated kitchen and cold storage areas.

The commissioners referred the request to the finance committee to bring a funding recommendation back to the board.

At least 60 percent of the funding is expected to be in place by late summer with design plans finalized this fall. Construction is planned for 2020.

---

### *Help us keep a good thing going; Alumni News is a worthwhile cause to support*

The Alumni News is published by volunteers as a free gift for Luverne High School alumni who enjoy the quarterly updates on classmates and their hometown. This publication is the envy of school districts everywhere, as it also maintains a priceless database of our alumni dating back to classes that graduated decades ago. There are expenses incurred with printing, mailing and database support, and these costs are paid for with generous contributions from our alumni and readers.

Today, it’s easier than ever to support our efforts with your donations.

Memorials and contributions may be sent to:

**Alumni News, 709 N. Kniss Avenue, Luverne, Minnesota 56156.**

OR donate online, [www.alumninews.info](http://www.alumninews.info) and click on the **DONATE** button.



# Reunions in the Making

Please send change of address to Alumni News or email: [piersonprp@alliancecom.net](mailto:piersonprp@alliancecom.net)

## **CLASS OF 1969** **50th Class Reunion** **May 31– June 1, 2019**

### **FRIDAY**

Meet at the Palace Theatre for your name tag!  
Social Hour—Buffalo Days Cruise-in—6 to 8 pm  
Gathering & Apps at Take 16 Brewing Co.—8 pm

### **SATURDAY**

1969 Float in Buffalo Days Parade—10 am  
Trolley Tour & Gathering at Papik's—1 to 4 pm  
9 Hole Golf Scrambler—2:30 pm  
Social Hour at Country Club—5 pm  
Reunion Dinner at Luverne Country Club—6 pm  
Check out our Facebook Page "LHS Class of '69"!  
If you didn't received your reunion packet contact:  
Lorna Siebenahler Bryan [lornabryan@alliancecom.net](mailto:lornabryan@alliancecom.net)  
Janine Jordahl Papik [janinepapik@hotmail.com](mailto:janinepapik@hotmail.com)

## **CLASS OF 1979** **40th Class Reunion**

**August 2-3, 2019**

**FRIDAY**—Gathering and Social Hour—7 pm  
At Take 16 Brewing Company

**SATURDAY**—Golf Scrambler  
Bison Tour at BMSP, LHS Tour, History Center Tour  
Reunion Dinner at Luverne Country Club—6 pm

Watch your email & check out Facebook

**"Luverne MN Class of 1979"**

Information & contacts:

Laurie DeWispelaere 306-547-2467 [laurie\\_dew@yahoo.com](mailto:laurie_dew@yahoo.com)

Colleen Deutsch 507-227-6163 [colleendeutsch79@gmail.com](mailto:colleendeutsch79@gmail.com)

## **CLASS OF 1959** **60th Class Reunion**

**Saturday—September 14, 2019**

10 am—Trolley Tour of Luverne & BMSP—\$5 each  
*Meet at the Luverne Area Chamber*  
1:00 pm—Coffee gathering (Location to be determined)  
Reunion Dinner at The Bluestem  
4:00 pm—Social Hour & 5:00 pm—Dinner

Information & Contacts:

Dave Connell (507.920.5180) [donnak@arvig.net](mailto:donnak@arvig.net)

Carol Wulf [cwulf@iw.net](mailto:cwulf@iw.net)

## **CLASS OF 1954** **65th Class Reunion** **September 13-14, 2019**

### **FRIDAY**

Gathering at GrandStay Hotel & Suites from 2 to 7 pm

### **SATURDAY**

Tour of Historic Palace Theatre at 11 am  
Lunch to follow (on your own) at Sterling's  
Reunion Dinner—Luverne Country Club at 5 pm

Information & Contacts:

Jim Klassen [klassen@embarqmail.com](mailto:klassen@embarqmail.com)

Peggy Schmidt Anderson [pegswede36@gmail.com](mailto:pegswede36@gmail.com)

## **CLASS OF 1989** **30th Class Reunion** **July 12-14, 2019**

Friday, July 12, 7 p.m. to ? Happy Hour at Take 16  
Saturday, July 13, 6 p.m. Dinner at the Eagles  
Club and After Party at The Lake

Reunion Contact:

JILL FLATEQUAL BROUGHTON

[jillmbroughton@hotmail.com](mailto:jillmbroughton@hotmail.com)

## **CLASS OF 1984** **35th Class Reunion** **July 11-13, 2019**

Celebrate during Luverne's  
**HOT DOG NITE**

Reunion Contact: Maryln Van Grootheest  
[marylnv@hotmail.com](mailto:marylnv@hotmail.com)—507-227-0043

## **CLASS OF 1964** **55th Class Reunion** **May 31– June 1, 2019** Celebrate during Luverne's **BUFFALO DAYS**

Watch for additional information:  
CLOYCE COONEY SMITH

**ARE YOU PLANNING A CLASS REUNION?** Email Patti Pierson at [piersonprp@alliancecom.net](mailto:piersonprp@alliancecom.net)  
and she will be able to provide you with a class listing and also labels.



***Alumni News Staff:*** Cindy Arends, Jane Wildung Lanphere, Carol Schumacher Serie,  
Johnna Ahrendt, Patti Kirby Pierson, Rock County Opportunities and Lori Sorenson.

***1304145***

Volume 29 Issue 3

***Alumni News***

**709 North Kniss Avenue**

**Luverne, MN 56156**

**Lu<sup>ver</sup>ne**  
*Love the life!*

**Change Service Requested**

Non-Profit  
Organization  
US Postage Paid  
Luverne, MN  
Permit No. 115

Place Label Here